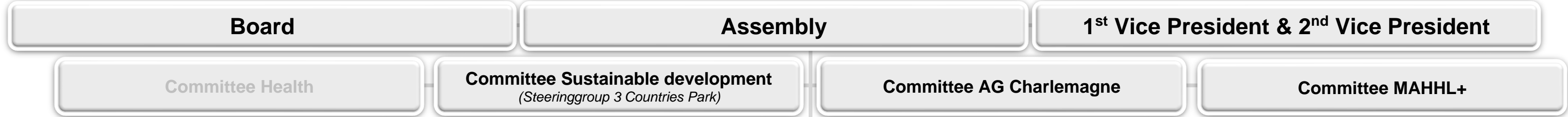


# Organigram EUREGIO MEUSE-RHINE EGTC



**PRESIDENT OF THE EMR**  
Luc Gillard



**DIRECTOR OF THE EMR**  
Michael Dejozé



**Management assistant  
Human resources**  
Ronja Schmetz

1 FTE

1 FTE

+ Crossquality



**Project & office coordinator**  
Marc Genten

0,4 FTE



**OFFICE**

- Secretariat**  
Nathalie Drykoningen  
1 FTE
- Communication manager**  
Tamara Koenen  
+ Crossquality  
1 FTE
- Accountant**  
Harrie Houben  
0,3 FTE

**POLICY OFFICERS / REPRESENTATIVES**

- Labour market**  
Region Aachen Zweckverband  
Jan Schliewert  
0,6 FTE
- Neighbour languages**  
Province of Limburg (NL)  
Theo Alsters  
0,6 FTE
- Economy & innovation**  
Province of Limburg (B)  
Carine Van Hove  
0,6 FTE
- Security & tourism**  
Province of Liège (B)  
Marc Genten  
0,6 FTE
- Culture & health**  
East-Belgium  
Michel Margraff  
0,6 FTE

**PROJECTS**

- People to People**  
Sonja Fickers  
0,8 FTE
- EMRLingua**  
Manuel Justen  
Paul Hölsgens  
Roland Wolff  
1 FTE
- 3 Countries Park**  
Anja Brüll  
Alexandra Silinski  
0,5 FTE
- MAHHL+**  
Youri Lebon  
Leen Scheelen  
0,3 FTE
- AG Charlemagne**  
Helga Klinkers  
Patrick Hahne  
0,3 FTE

**PARTNERSHIPS / NETWORKS**

- 3 Countries Park**  
Anja Brüll  
Alexandra Silinski  
0,5 FTE
- MAHHL+**  
Youri Lebon  
Leen Scheelen  
0,3 FTE
- AG Charlemagne**  
Helga Klinkers  
Patrick Hahne  
0,3 FTE